

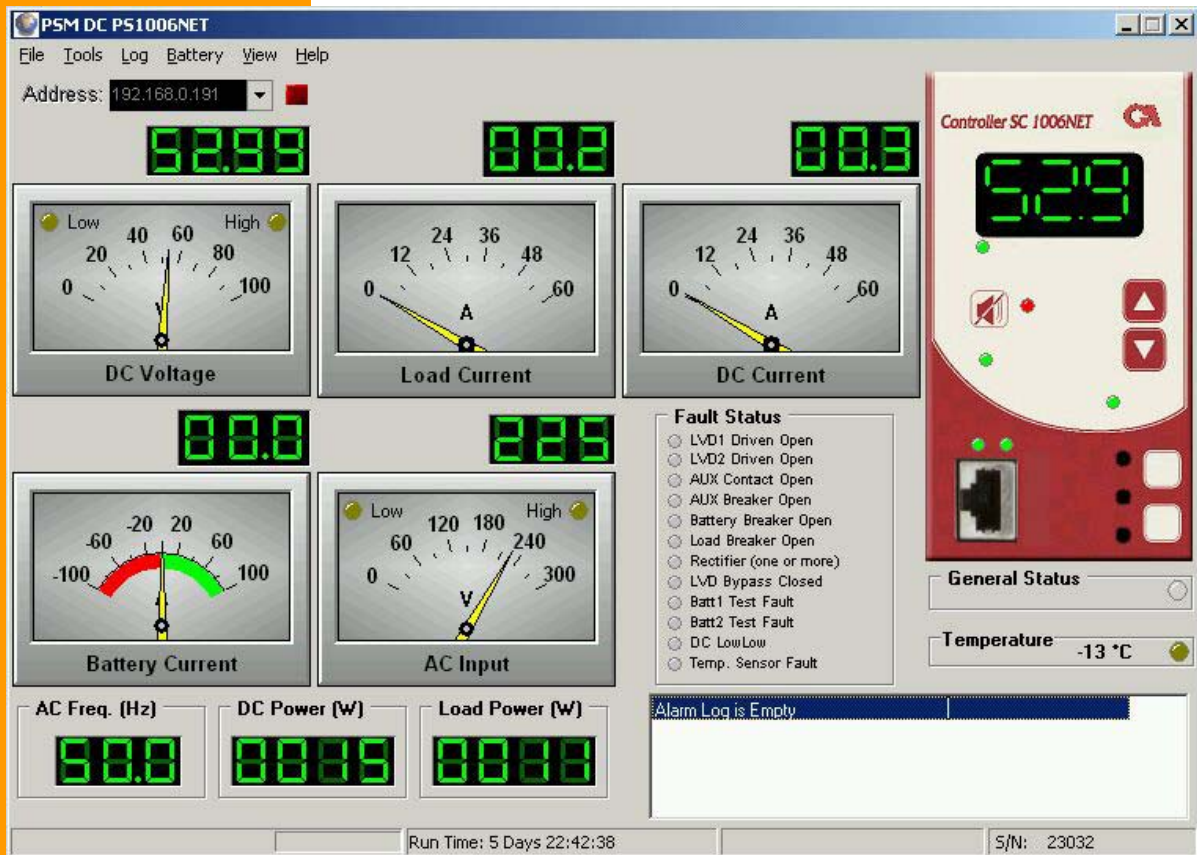
# An easy-to-use management tool for your PS1006 Power System

## PSM-DC 1006 Power System Monitor

Gamatronic's unique PSM-DC 1006 software enables you to monitor, manage and control a PS1006 Power System in real-time from both local and remote locations.

Indications about the real-time status of PS1006 are displayed via LED indicator lights, measurement meters, a live image of PS1006's controller's panel, and an alarm log.

The user-friendly GUI - with its pushbutton controls and configuration windows for setting system parameters - makes it easy to manage and control the system.



Features	Description
Software	PSM-DC 1006
Power System	PS1006(Net and Standard)
General	One software supports one system Real-time alarm and status information User-programmed Dry Contacts, Alarms & Network Settings User-defined nominal values user-defined authorization hierarchy LVD and battery control Fault history and statistics logs Multi-language support
User Interface	User-friendly GUI LED indicators, LCD display, Pushbutton controls Analogical and digital meters
Communication	RS232, SNMP/PPP - Remote access via Modem or Ethernet (SC1006Net)
Operating System	WINTEL
Hardware Required	PEN II, 32MB MEM, 10 MB HD, SERIAL/NETWORK PORT, Network Adaptor\Serial cable\Modem
Catalog Number	199PSMDC